

December 2024

NEWSLETTER



Vitality! From the Director by John A. Jaszczak, Director and Curator

When you think of museums, do you think of institutions that are full of life? If you were to spend a day at the A. E. Seaman Mineral Museum shadowing any of our staff, I think you would say to yourself, "There is a lot going on here!" Indeed, there is a lot going on at the museum. For the past 18 months we have been working on a strategic plan that builds on our remarkable legacy and seeks to lay a foundation for an impactful future. I had the privilege to be able to talk about the museum and its vitality to the University's Board of Trustees in October. It was a treasured opportunity to share how the useum supports the University's mission and identity, to present some of the highlights of our activities, and to spread some excitement about our mission to inspire and educate people about minerals using the incredible resources of which we are stewards. We are grateful to the Board of Trustees and to the University's administration for their support. We also extend our thanks to all of our friends and donors who contribute to the life and vitality of the A. E. Seaman Mineral Museum.

John (Jack) T. Seaman (1919-2024)

Early on November 18, 2024, the museum lost a dear friend with the passing of Jack Seaman, grandson of A. E. Seaman (founder and curator) and son of Wyllys A. Seaman (3rd curator). On the occasion of his 103rd birthday, Jack and his dear wife Phyllis, established the John and Phyllis Endowment for Curation of the A. E. Seaman Mineral Museum in honor of Jack's father and his grandfather. When asked what the secret is to long life, Jack would smile and say "ballroom dancing," which he and Phyllis enjoyed for fun and competition well into Jack's 90s. Jack also greatly enjoyed collecting and using cameras, and playing the organ. Phyllis asks that those wishing to honor Jack's memory may make a donation in support of the museum to their endowment at the Michigan Tech Fund. Memorial gifts can be sent to the Museum or can be made online. Details can be found at <https://museum.mtu.edu/support-us/giving>.



Crowdfunding Success! Quincy Mine Coppers Have a Permanent Home

Thanks to the generosity of over 50 donors, we have completed the purchase of the two amazing specimens of crystallized copper from the Quincy Mine through our crowdfunding campaign. The opportunity to be able to acquire world-class specimens like these from Michigan's famous Copper Country is truly rare. It is thrilling to know that the A. E. Seaman Mineral Museum will be their permanent home. We hope you have an opportunity to see them in person, since due to their large size, photographs do not do them justice. We also thank Collector's Edge Minerals for their assistance in the process and for donating the custom-made acrylic display bases.



"Top Billing" in Rocks & Minerals Magazine

The September/October (vol. 99 no. 5) 2024 issue of *Rocks & Minerals* magazine has two articles of special interest. At the invitation of Editor-in-Chief Marie Huizing the museum's most iconic copper specimen was featured in an article, "Signature Specimen: The Gabriel Copper at the A. E. Seaman Mineral Museum of Michigan Technological University." Our director and curator John A. Jaszczak co-authored the article with Carl Francis, curator at the Maine Mineral & Gem Museum. The article discusses some of the back story about the specimen and its donor, Donald C. Gabriel. The editor's "Chips from the Quarry" column also shows an image of the July/August 2012 *Rocks & Minerals* cover, illustrating the Gabriel Copper as rendered in an excellent painting by esteemed artist Fredrick C. Wilda. Also appearing in the September/October issue is an article, "Who's Who in Mineral Names: John A. Jaszczak (b. 1961)" written by John Rakovan, executive editor and

senior curator of the New Mexico Mineral Museum. Dr. Rakovan's article gives a brief description of the mineral jaszczakite $[(\text{Bi,Pb})_3\text{S}_3][\text{AuS}_2]$, and presents a short biography of our director and curator John Jaszczak after whom jaszczakite was named in 2016 by Luca Bindi and Werner Paar.

ILSG 70th Conference and Former Museum Director Recognized

The museum had the honor of co-hosting the 70th annual Institute of Lake Superior Geology (ILSG) conference, May 16 and 17. ILSG is a professional organization that promotes a better understanding of the geology of the greater Lake Superior region. Its annual meeting provides an opportunity to listen and view presentations, participate in geological field trips, and exchange geological ideas and work. The 2024 conference in Houghton, MI had the highest attendance for the last 5 years – 192 attendees! This was made possible by the co-chairs, Theodore J. Bornhorst, PhD (retired Director of the A. E. Seaman

Mineral Museum and Emeritus Professor of Geological and Mining Engineering and Sciences at Michigan Tech), Erika Vye, PhD (Geosciences Research Scientist at the Great Lakes Research Center at Michigan Tech), Patrice Cobin, MS (Assistant Director of the A. E. Seaman Mineral Museum of Michigan Tech), and James DeGraff, PhD (Research Professor of Geological and Mining Engineering and Sciences at Michigan Tech).

During the conference, ILSG officers and the co-chairs (excluding Theodore) surprised Ted with recognition of his 50 years of participation and service to ILSG. He first attended ILSG in 1974 and has since published more than 40 abstracts and led multiple field trips. He also served as principal chair/organizer of the annual conference 6 times between 1983 to 2024 and his efforts have helped ensure the continuation of the ILSG.



Ted Bornhorst with his award.

Heinrich Lecture by Dr. Robert M. Hazen

The Museum was privileged to host Dr. Robert M. Hazen, Senior Staff Scientist at the Carnegie Institution's Earth and Planets Laboratory, and Clarence Robinson Professor of Earth Science at George Mason University, as its 2024 Heinrich Lecturer. On May 17, Dr. Hazen presented a fascinating and engaging public lecture on "Mineral Evolution: A Case Study of a New Natural Law," which is recorded and can be viewed through the link on the Museum's Facebook page. As author of over 400 scientific articles, Dr. Hazen is a visionary scientist. Among his many awards include being named one of the world's top 10 most influential scientists, and he received the 2021 International Mineralogical Association's Medal of Excellence. He has also written 25 books, including *The Story of Earth* (Viking-Penguin, 2012), and *Symphony in C: Carbon and the Evolution of (Almost) Everything* (W. W. Norton & Co., 2019).



Dr. Hazen presenting "Mineral Evolution: A Case of a New Natural Law".

Keweenaw Mineral Days Joined Mineral Week!

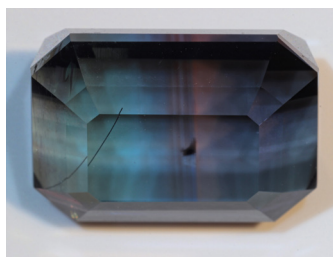
This year, the museum joined Quincy Mine to collaborate with the Copper Country Rock and Mineral Club's Mineral Week to create a packed week of events throughout the Keweenaw Peninsula. The museum hosted its annual Mineral Surplus Sale and had outstanding attendance - one of our best years ever! Our surplus sales are key to selling parts of donations we receive that we do not keep for the museum; the proceeds are then used for things like purchasing specimens needed for the collection or to complete exhibits in the gallery. We also hosted an excellent talk by Phil Persson, of Persson Rare Minerals entitled, "Crystallized Mineral Specimens from the Fissure Vein Type Copper Deposits of Keweenaw County, Michigan".



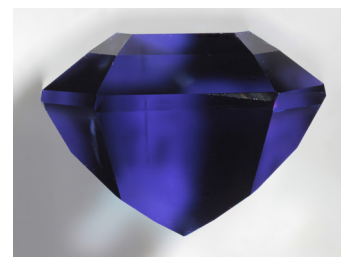
KMD attendees participating in the Museum's Surplus Sale.

Merelani Minerals Display

For several years, the museum has been building a suite of fine and unusual minerals from the famous tanzanite gem mines in the Merelani Hills of northern Tanzania. This summer, the museum acquired a select suite of specimens from Simon Harrison, who has been travelling to Tanzania since 2010. The collection, which is on display in the museum, includes several magnificent sulfide minerals [see *Mineralogical Record* vol. 45. pages 553-570 (2014)], including two extremely large and lustrous crystals of pyrite, several specimens of rare merelaniite, and an exceptional crystal of wurtzite on calcite. Also included are several specimens of bright green grossular (tsavorite) garnets, and four zoisite (tanzanite) crystals showing various colors and habits. Merelani is also well known for its diopside crystals. The new collection includes a very large specimen of bright green diopside crystals in graphite matrix, an attractive cluster of



Tanzanite gemstone (1.2-cm long) displaying color zonation and a whisker of merelaniite.



The same tanzanite gemstone from a different angle showing a different color.



The new Merelani display at the museum.

diopside crystals with platy white calcite crystals, and a very unusual miniature specimen of bright green diopside with blue fluorapatite crystals with associated minerals. Included in the same exhibit is a faceted tanzanite gemstone that displays beautiful color zonation and pleochroism, and hosting a bonus inclusion of a whisker of merelaniite. This 6-carat gem was purchased with funds donated in memory of Beverly (Tiger) Salotti.

Museum Membership Changes

For over 25 years you have helped support the museum through your yearly membership, which contributes to our ability to buy new and exciting acquisitions for the collection, and to fund various gallery and collection projects. During this time the membership levels and benefits have largely remained unchanged; the time has come to make some changes. The biggest changes are the increase in cost, added benefits, and the addition of two new levels, Family and Connoisseur. Again, thank you for your support all these years, the museum would not be the internationally recognized show-stopper it is without you!

Kibble and Drill

We continue to develop our minerals and mining area in the museum with the addition of some impressive mining artifacts. The suspended iron kibble (a Cornish mining term) weighs approximately 200 pounds and was recovered in the summer of 1984. It would have been used in the 1850s and 1860s to hoist ore and rock from the mine using a winch. The kibble was donated to the museum by Ross Lillie and Tom Zuchnik. Just around the corner in the museum, a one-man drill from the Quincy Mine has been installed and gives a sense of the intense labor the miners faced on a daily basis. The drill is on loan from the Quincy Mine Hoist Association.



The 200 lb kibble hanging above the copper artifacts display (left) and the one-man drill from the Quincy Mine (right).

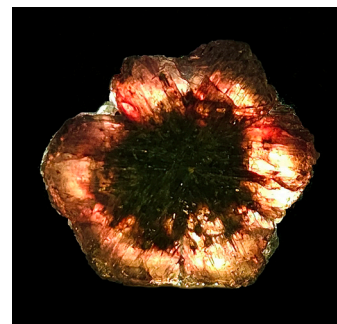
New Acquisitions



Dodecahedral and twinned copper crystals (8-cm tall) with partial coating of chrysocolla from the Chimney Rock Quarry, Somerset Co., New Jersey. Gift of George and Terri Balogh.



Chrysoberyl (variety alexandrite) from Novello claims, Masvingo, Zimbabwe. The remarkable snowflake twin on matrix is 3.5-cm wide. Gift of Paul and Janet Clifford



This smaller tabular alexandrite twin is 1.7-cm wide and shows strong color change (alexandrite effect) in sunlight versus incandescent light. It is backlit in the photo. Gift of Paul and Janet Clifford.



Want to make a gift?
Scan the QR code to give
and learn how your gift impacts
the museum and its mission.

Scan to follow us
on Facebook to
stay informed on
museum's happenings.





Return Mailing Address:
Julie Stark
A.E. Seaman Mineral Museum
Michigan Tech
1400 Townsend Drive
Houghton, MI 49931

MEMBERSHIP LEVELS

Free Admission for all Members

- ☐ \$30 Individual Level
- ☐ \$55 Couple Level
- ☐ \$100 Family Level
- ☐ \$300 Crystal Level
- ☐ \$500 Copper Level
- ☐ \$1000 Silver Level
- ☐ \$2000 Gold Level
- ☐ \$5000 Connoisseur Level

Other Donation Amount: _____

Please see reverse side for details on the benefits of each membership level.



Please Mail To:

Julie Stark
A.E. Seaman Mineral Museum
Michigan Tech
1400 Townsend Drive
Houghton, MI 49931

ANNUAL BENEFITS

Individual	Free admission for member for a year.	\$30
Couple	Free admission for either or both individuals for a year.	\$55
Family	Free admission for your immediate family for a year.	\$100
Crystal	Free admission for your immediate & extended family for a year.	\$300
Copper	Free admission for your immediate & extended family, and name on a Copper Level case for a year.	\$500
Silver	Free admission for your immediate & extended family for a year, name on a Silver Level case, and free admission for 2 accompanying guests per visit for a year.	\$1000
Gold	Free admission for your immediate & extended family for a year, name on a Gold Level case, and free admission for 4 accompanying guests per visit for a year.	\$2000
Connoisseur	Free admission for your immediate & extended family, name on a Connoisseur Level case, and free admission for 10 accompanying guests per visit for a year.	\$5000