

December 2022

NEWSLETTER



Celebrating the Past, Investing in the Present, Looking to the Future by John A. Jaszczak, Director and Curator



The year 2022 has been an exciting one to celebrate mineralogy in general, but particularly so at the A. E. Seaman Mineral Museum. The International Mineralogical Association designated 2022 as the “Year of Mineralogy”. They hosted their 23rd general international meeting in Lyon, France in July, and recognized the bicentennial of the death of René Just Haüy - father of modern mineralogy and crystallography. Our Museum Manager, Patrice Cobin, was able to attend the conference and help promote the museum and its 120th anniversary by giving a talk, “120 Years of the A. E. Seaman Mineral Museum: Treasure of the Michigan Copper Country”. Continuing our own celebration more locally, I

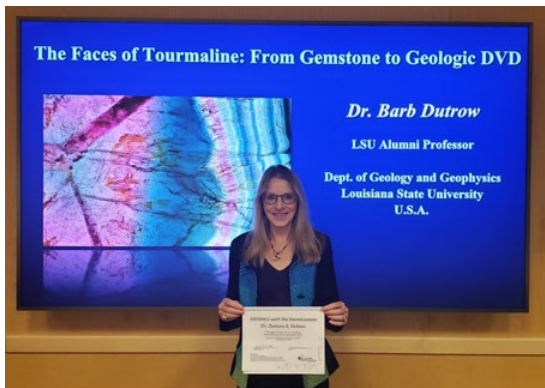
was able to speak on “120 Years of the A. E. Seaman Mineral Museum” during Keweenaw Mineral Days in July, at the Ishpeming Rock and Mineral Club’s show in August, and at the Greater Detroit Gem, Mineral and Fossil Show in October. I also brought a display to Detroit

entitled “Seldom-Seen Specimens from the Collection of Professor A. E. Seaman.” In September we further celebrated mineralogy and the museum by welcoming Dr.

Barbara Dutrow (Adolphe G. Gueymard Distinguished Professor of Geology at Louisiana State University and 2022 Carnegie Mineralogical Award winner) as the 2022 Heinrich Lecturer. She met with students, faculty, and staff, and gave two excellent talks that highlighted the importance of minerals.



Exhibit of minerals from the collection of A. E. Seaman displayed at the 77th Greater Detroit Gem, Mineral and Fossil show in October.



This year saw several updates in the museum’s Thomas D. Schaffner Hall. We recently completed installation of new wayfinding signs identifying the various galleries (Beauty of Minerals, Michigan Copper Country, Mineral Treasures, etc.). These were designed and fabricated in collaboration with local firms Monte Consulting and Industrial Graphics. Additionally, thanks to matching funds from a Keweenaw Heritage Grant from the Keweenaw National Historical Park Advisory Commission, the exhibit cases in museum’s Michigan Copper Country gallery were revitalized by having the original plywood and laminate doors replaced by fresh-looking cherry wood doors custom made by Reagan Woodworking. We greatly appreciate the grant from the Advisory Commission, Pat Reagan’s craftsmanship, and the matching funds from donations from our supporters. We have more plans for significant changes to some of the museum’s galleries and displays that we’ll be working on this coming winter and spring.

Thanks to some generous gifts supporting the museum’s educational mission, we are continuing our collaboration with two teachers from the Ironwood, Michigan and Hancock, Michigan school districts to develop a curriculum for elementary school students in the 5th and 7th grades for meaningful and fun visits to the museum that also include pre-visit and post-visit activities at their schools. With the aid of Dr. Emily Gochis of the Copper Country Intermediate School district, the teachers further developed their plans this past summer and testing of the curricula began this fall with a visit by 51 seventh-grade students from Ironwood, MI, who visited both the museum and the Quincy Mine. The overall experience was wonderful! We look forward to working with the students from Hancock next and then sharing the plans with other teachers to try and expand upon in the future.

A new wayfinding sign welcomes visitors to the Michigan Copper Country gallery, where custom cherry wood doors have revitalized the display cases.



Happy Holidays from us to you!



Follow us on Facebook
@MineralMuseumofMTU
Or scan the QR code.

New Specimen Donations

The museum's collection has grown wonderfully over the last year due to generous donations. Here is a selection:



A high luster Zoisite, var. Tanzanite (2.5x3.2x5.5 cm), from Merelani, Tanzania, which under a large polarizer shows trichroic colors due to the different orientations of each crystal. Acquisition was funded by museum donations.



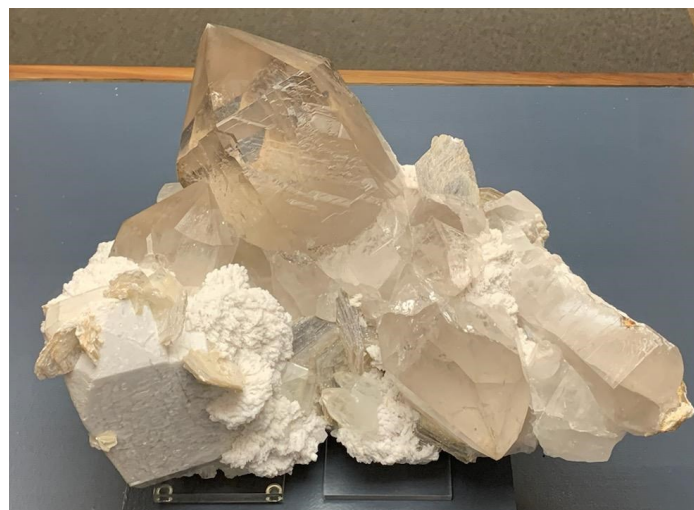
Alex Paavola collected this fine-quality pumpellyite (4.1x2.3 cm) with rare rich-association of native copper. The specimen was soft polished by Catherine Paavola.

Purchase was made possible by museum donations.

Catherine Paavola donated and soft polished this beautiful pumpellyite (greenstone) (3.3x2.4 cm) from Isle Royale.



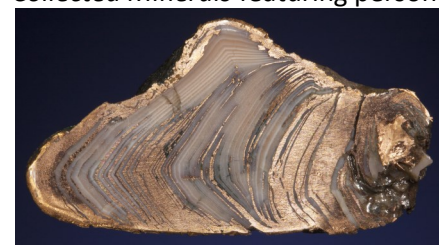
The museum is so thankful that we can now say "yes!" when guests ask if we have any alexandrite. This highly symmetrical, multiply-twinned, 2.5 cm crystal on micaceous matrix shows good alexandrite effect. Acquisition was funded by museum donations.



An impressive 14" x 13" x 7" specimen composed of prominent smoky quartz crystals and a well-formed microcline crystal, along with smaller crystals of topaz, muscovite, albite and cookeite, from Shigar Valley, Gilgit-Baltistan, Pakistan. Donated by Fred Cirillo and Sharon Meieran.

Red Carpet Minerals by Patrice Cobin, Museum Manager

The Mineralogical Record printed a supplement in May-June 2022 entitled *Eureka! Self-Collected Minerals* featuring personally-collected specimens of committed rock hounds.



Copper and Agate (3.3 cm) from Wolverine #2 mine, Houghton Co., MI.

Once such collector and great friend of the museum, Paul LaBonte, has spent many years collecting in the Upper Peninsula. Of the 24 specimens featured that LaBonte collected, 12 are now part of the museum collection, like this gorgeous copper-banded agate from Wolverine #2 mine, and this 12-cm copper from Delaware mine. Thank you, Paul, for enriching the museum's collection.



Copper from Delaware mine, Keweenaw Co., MI.

Giving to the museum is easy! Visit us at museum.mtu.edu/support-us/giving or scan this QR code:

